

**Antica
Ceramica
Rubiera**

Since 1961

NAMUR

La riproduzione delle tipiche tessiture della pietra di Namur in Vallonia. Lo smalto, morbido e coprente, è arricchito da un fine effetto materico digitale. La gamma si sviluppa in 2 formati rettificati e 3 colori, per un versatile utilizzo nei più moderni contesti.

Porcelain stoneware inspired by the typical texture of a calcareous stone from Namur, in Wallonia. Its mellow and solid glaze is enriched by a finely-textured digital effect. The range offers 2 sizes and 3 colors, making the series a versatile choice for wall or floor coverings in residential and commercial contemporary settings.

NAMUR

60x60 24"x24" - 30x60 12"x24"

GRES PORCELLANATO
PORCELAIN STONEWARE
GRÈS CÉRAMÉ
FEINSTEINZEUG



COLORI • COLORS • COULEURS • FARBEN



Beige



Pearl



Fog



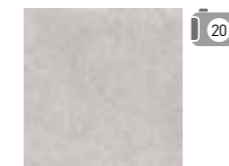
NAMUR BEIGE 60x60 24"x24"



NAMUR PEARL 30x60 12"x24"



003238/38 122 ■
Namur Beige Rettificato
60x60 24"x24"



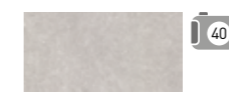
003163/38 122 ■
Namur Pearl Rettificato
60x60 24"x24"



003165/38 122 ■
Namur Fog Rettificato
60x60 24"x24"



003236/40 61 ■
Namur Beige Rettificato
30x60 12"x24"

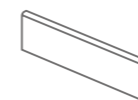


003169/40 61 ■
Namur Pearl Rettificato
30x60 12"x24"

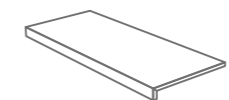


003171/40 61 ■
Namur Fog Rettificato
30x60 12"x24"

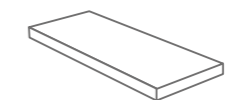
TRIMS



Battiscopa 7,2x60 20 ■
003240/09 Beige 15 ■
003172/09 Pearl 15 ■
003174/09 Fog 15 ■



* Gradino Frontale 30x60 1 ■
004196/132 Beige 26 ■
004302/132 Pearl 26 ■
004303/132 Fog 26 ■















* Gradino Angolare DX/SX 30x60 1 ■
004304/204 Beige 38 ■
004305/204 Pearl 38 ■
004306/204 Fog 38 ■

* Disponibili solo su ordinazione • Available on demande

PESI E MISURE / WEIGHT AND SIZES / POIDS ET MESURES / GEWICHTE UND VERPACKUNGEN							
dimensioni sizes dimensions abmessungen	spessore thickness épaisseur stärke	pz/collo pcs/box pc/boite stk/ktn	mq/collo sqm/box m/boite qm/ktn	kg/collo kg/box kg/boite kg/ktn	colli/pallet box/europal boites/europal ktn/europal	mq/pallet sqm/pallet m/pallet qm/pallet	kg/europal kg/europal kg/europal kg/europal
Fondo 60x60 Rettificato	9,5 mm	5	1,80	34,20	24	43,20	840
Fondo 30x60 Rettificato	9,5 mm	7	1,26	25,00	40	50,40	1020

CARATTERISTICHE TECNICHE • TECHNICAL FEATURES

GRES PORCELLANATO • PORCELAIN STONEWARE • GRÈS CÉRAME • FEINSTEINZEUG
UNI EN 14411 BIA ALLEGATO G (ISO 13006)

Caratteristica tecnica Technical feature Caractéristique technique Technische Eigenschaft	Norma Norm Norme Norm	Valore richiesto dalle norme Required standards Valeur prescrite par les normes Normvorgabe	NAMUR
 Assorbimento d'acqua Water absorption Absorption d'eau Wasseraufnahme	UNI EN ISO 10545-3	≤ 0,5%	≤ 0,5%
 Resistenza alla flessione Bending strength Résistance à la flexion Biegefestigkeit	UNI EN ISO 10545-4	≥ 35 N/mm ²	Conforme Corresponding Conforme Entsprechend
 Resistenza al gelo Resistance to frost Résistance aux gel Frostbeständigkeit	UNI EN ISO 10545-12	Nessuna alterazione No alteration Aucune alteration Keine Veränderung	Non gelivo Frost-proof Non gélifs Frostsicher
 Caratteristiche di regolarità Regularity characteristics Caractéristiques de régularité Regelmäßigkeit	UNI EN ISO 10545-2	Lunghezza e larghezza / Length and width Longuer et largeur / Länge und breite	Tolleranze minime Low alteration Minime alteration Geringe Veränderung
		Spessore / Thickness Epaisseur / Stärke	
		Rettilineità spigoli / Straightness of sides Rectitude des arêtes / Kantengeradheit	
		Ortogonalità / Rectangularity Orthogonalite / Rechtwinkligkeit	
		Planarità / Length and width Planeite de surface / Ebenflächigkeit	± 0,5% max
 Qualità della superficie Surface quality Qualités de la surface Oberflächenqualität	UNI EN ISO 10545-2	Il 95 % min. delle piastrelle di prova deve essere esente da difetti visibili Minimum 95% of the tested tiles must be free from visible defects 95% min. des carreaux de test ne doit pas contenir de défauts visibles Min. 95% der geprüften Fliesen dürfen keine sichtbaren Mängel aufweisen	Conforme Corresponding Conforme Entsprechend
 Resistenza ai prodotti chimici Resistance to chemical products Résistance aux produits chimiques Widerstand gegen Chemikalien	UNI EN ISO 10545-13	Minimo GB Minimum GB Minimum GB Minimum GB	Conforme Corresponding Conforme Entsprechend
 Resistenza all'abrasione (metodo PEI) Wear resistance (PEI test) Résistance à l'abrasion (méthode PEI) Widerstand gegen Abrieb (nach PEI)	UNI EN ISO 10545-7	Come dichiarato As stated Comme déclaré Wie angegeben	Da 3 a 5 in base al colore From 3 to 5, according to color De 3 à 5, selon couleur Von 3 zu 5, je nachdem farbefarbe
 Resistenza alle macchie Staining resistance Résistance aux taches Widerstand gegen Fleckenbildung	UNI EN ISO 10545-14	Min. 3	Conforme Corresponding Conforme Entsprechend
 Stabilità dei colori Colours stability Stabilité des couleurs Farbbeständigkeit	DIN 51094	Stabile	Nessuna Variazione
 Durezza Superficie Mohs Mohs surface hardness Dureté de la surface (échelle Mohs) Ritzhärte nach Mohs	UNI EN 101	Come dichiarato As stated Comme déclaré Wie angegeben	Naturale 6-8
 Resistenza agli sbalzi termici Thermal shock resistance Résistance aux écarts de température Temperaturwechselbeständigkeit	ISO 10545-9	Metodo di prova disponibile Test method available Méthode d'essai disponible Prüfverfahren verfügbar	Resiste Resistant
 Resistenza allo scivolamento Slip resistance Résistance au glissement Rutschemmende Eigenschaft	METODO B.C.R.A.	D.M.I. Giugno 1989 n. 236 (μ > 0,40)	> 0,4
	DIN 51130	In funzione dell'ambiente o della zona di lavoro Basing on the environment or on the working area	R10





Antica Ceramica Rubiera S.r.l.

Via Salvaterra, 18/A - 42048 Rubiera (RE) - ITALY

Tel. +39 0522 628841 - Fax +39 0522 628976

www.anticaceramica.it - info@anticaceramica.it

Seguici su:  

MADE IN ITALY



OHSAS 18001
GREENGUARD - UPEC
UNI EN ISO 14021:2016
EN ISO 50001:2011
EN ISO 9001:2008
EN ISO 14001:2004

