

**Antica
Ceramica
Rubiera**

Since 1961

PORFIDI

Colori compatti e una struttura superficiale bocciardata e antiscivolo.

La serie riproduce il tradizionale porfido italiano, impiegabile con continuità in interno ed esterno, con destinazione d'uso residenziale e commerciale anche di elevato traffico.

Dense colours with a non-slip, bush-hammered surface structure. The series reproduces traditional Italian porphyry and can be used to create a seamless look to link interiors and exteriors, for residential use or high-traffic commercial applications.



PORFIDI

31x62 12"x24"

GRES PORCELLANATO
PORCELAIN STONEWARE
GRÈS CÉRAMÉ
FEINSTEINZEUG

V2

R10

HD

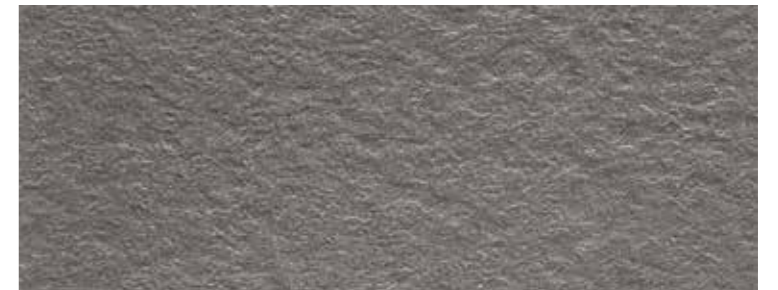
COLORI • COLORS • COULEURS • FARBEN



Sabbia



Grigio



Fumo



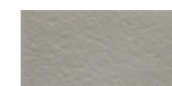
PORFIDO GRIGIO 31x62 12"x24" FUMO 31x62 12"x24"



PORFIDO FUMO 31x62 12"x24"



002493/33 66 ■
 Porfido Sabbia
 31x62 12"x24"

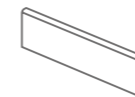


002492/33 66 ■
 Porfido Grigio
 31x62 12"x24"

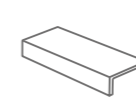


002490/33 66 ■
 Porfido Fumo
 31x62 12"x24"

TRIMS



Battiscopa 7,2x62 20 ■
002497/09 Sabbia 15 ■
002496/09 Grigio 15 ■
002494/09 Fumo 15 ■




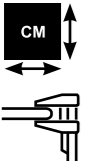
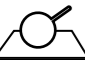









Terminale a Elle Monolitico OUT R11 16,5x6x31 8 ■
002514/21 Sabbia 47 ■
002513/21 Grigio 47 ■
002511/21 Fumo 47 ■

PESI E MISURE / WEIGHT AND SIZES / POIDS ET MESURES / GEWICHTE UND VERPACKUNGEN							
dimensioni sizes dimensions abmessungen	spessore thickness epaisseur stärke	pz/collo pcs/box pc/boite stk/ktn	mq/collo sqm/box m/boite qm/ktn	kg/collo kg/box kg/boite kg/ktn	coll/pallet box/europal boites/europal ktn/europal	mq/pallet sqm/pallet m/pallet qm/pallet	kg/europal kg/europal kg/europal kg/europal
Fondo 31x62	9 mm	7	1,35	24,00	60	81,00	1460

CARATTERISTICHE TECNICHE • TECHNICAL FEATURES

GRES PORCELLANATO • PORCELAIN STONEWARE • GRÈS CÉRAME • FEINSTEINZEUG
UNI EN 14411 BIA ALLEGATO G (ISO 13006)

Caratteristica tecnica Technical feature Caractéristique technique Technische Eigenschaft	Norma Norm Norme Norm	Valore richiesto dalle norme Required standards Valeur prescrite par les normes Normvorgabe	PORFIDI	
 Assorbimento d'acqua Water absorption Absorption d'eau Wasseraufnahme	UNI EN ISO 10545-3	≤ 0,5%	≤ 0,5%	
 Resistenza alla flessione Bending strength Résistance à la flexion Biegefestigkeit	UNI EN ISO 10545-4	≥ 35 N/mm ²	Conforme Corresponding Conforme Entsprechend	
 Resistenza al gelo Resistance to frost Résistance aux gel Frostbeständigkeit	UNI EN ISO 10545-12	Nessuna alterazione No alteration Aucune alteration Keine Veränderung	Non gelivo Frost-proof Non gélifs Frostsicher	
 Caratteristiche di regolarità Regularity characteristics Caractéristiques de régularité Regelmäßigkeit	UNI EN ISO 10545-2	Lunghezza e larghezza / Length and width Longueur et largeur / Länge und breite	± 0,6% max	Tolleranze minime Low alteration Minime alteration Geringe Veränderung
		Spessore / Thickness Épaisseur / Stärke	± 5% max	
		Rettilineità spigoli / Straightness of sides Rectitude des arêtes / Kantengeradheit	± 0,5% max	
		Ortogonalità / Rectangularity Orthogonalité / Rechtwinkligkeit	± 0,6% max	
Planarità / Length and width Planéité de surface / Ebenflächigkeit		± 0,5% max		
 Qualità della superficie Surface quality Qualités de la surface Oberflächenqualität	UNI EN ISO 10545-2	Il 95 % min. delle piastrelle di prova deve essere esente da difetti visibili Minimum 95% of the tested tiles must be free from visible defects 95% min. des carreaux de test ne doit pas contenir de défauts visibles Min. 95% der geprüften Fliesen dürfen keine sichtbaren Mängel aufweisen	Conforme Corresponding Conforme Entsprechend	
 Resistenza ai prodotti chimici Resistance to chemical products Résistance aux produits chimiques Widerstand gegen Chemikalien	UNI EN ISO 10545-13	Minimo GB Minimum GB Minimum GB Minimum GB	Conforme Corresponding Conforme Entsprechend	
 Resistenza all'abrasione (metodo PEI) Wear resistance (PEI test) Résistance à l'abrasion (méthode PEI) Widerstand gegen Abrieb (nach PEI)	UNI EN ISO 10545-7	Come dichiarato As stated Comme déclaré Wie angegeben	Da 3 a 5 in base al colore From 3 to 5, according to color De 3 à 5, selon couleur Von 3 zu 5, je nachdem farbefarbe	
 Resistenza alle macchie Staining resistance Résistance aux taches Widerstand gegen Fleckenbildung	UNI EN ISO 10545-14	Min. 3	Conforme Corresponding Conforme Entsprechend	
 Stabilità dei colori Colours stability Stabilité des couleurs Farbbeständigkeit	DIN 51094	Stabile	Nessuna Variazione	
 Durezza Superficie Mohs Mohs surface hardness Dureté de la surface (échelle Mohs) Ritzhärte nach Mohs	UNI EN 101	Come dichiarato As stated Comme déclaré Wie angegeben	Naturale 6-8	
 Resistenza agli sbalzi termici Thermal shock resistance Résistance aux écarts de température Temperaturwechselbeständigkeit	ISO 10545-9	Metodo di prova disponibile Test method available Méthode d'essai disponible Prüfverfahren verfügbar	Resiste Resistant	
 Resistenza allo scivolamento Slip resistance Résistance au glissement Rutschemmende Eigenschaft	METODO B.C.R.A.	D.M.I. Giugno 1989 n. 236 (μ > 0,40)	> 0,4	
	DIN 51130	In funzione dell'ambiente o della zona di lavoro Basing on the environment or on the working area	R10	





Antica Ceramica Rubiera S.r.l.

Via Salvaterra, 18/A - 42048 Rubiera (RE) - ITALY

Tel. +39 0522 628841 - Fax +39 0522 628976

www.anticaceramica.it - info@anticaceramica.it

Seguici su:  

MADE IN ITALY



OHSAS 18001
GREENGUARD - UPEC
UNI EN ISO 14021:2016
EN ISO 50001:2011
EN ISO 9001:2008
EN ISO 14001:2004

